

TRIAGE EVALUATION

1. Restore Breathing;
Head - Tilt / Chin - Lift Method

(BPM=Breaths Per Minute)



MORE THAN > 30 BPM = "I" Treat SHOCK



Less than < 30 BPM = Circulation / bleed

2. Control Bleeding;
Arterial = Spurting
Capillary = Oozing
Venous = Excessive

Perform the Blanch Test



MORE THAN > 2 seconds = "I" Treat SHOCK

Treat for Shock:

Feet Up, Keep Warm,
-No Food / Drink



Less than < 2 seconds = Ck. Mental Status

3. Check Mental Status;
"Simple commands"
Fail = "I" Treat SHOCK
Follow = "D" Delayed

CERT POCKET GUIDE

WHEN ENTERING



WHEN YOU LEAVE



DANGEROUS
"DO NOT ENTER"

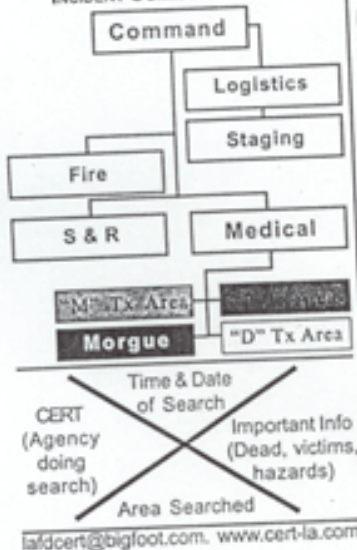
TRIAGE
IMMEDIATE = RED
DELAYED
MORGUE = Black
"OK" = Green



Courtesy of: Edgewater, FL CERT Team

Sponsored by: Edgewater, FL Fire/Rescue

CERT I.C.S.
INCIDENT COMMAND SYSTEM



YOUR HOME & YOUR FAMILY COME FIRST

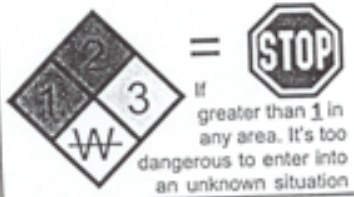
Make sure your home and family are taken care of. Shut off utilities if necessary. (If you smell gas, smell smoke, or see fire.) Assess your home for structural damage. Turn off utilities if you are going to leave your home.

- ASSIST YOUR NEIGHBORS
- WORK WITH A BUDDY
- SIZE-UP ALL SITUATIONS

Is it too dangerous? If yes, walk (run) away. Report to appropriate agency.

SEARCH & RESCUE

- Lightly damaged - Search, Triage, & Treat victims where you find them. Evacuate victims to treatment areas as needed.
- Moderate damage - Search & Evacuate victims as you find them.
- Heavily Damaged - STAY OUT!



CERT ASSEMBLY

If your home and neighborhood are stable and you want to do more...
ASSEMBLE AT YOUR LOCAL LAFD BATTALION HQ PARKING LOT

CERT HAM RADIO OPERATORS

CERT Emergency HAM Net
(Meet On-air Mon. 1930-2000)
147.300, PL110.9, +600/146.58 Simplex

TO VOLUNTEER FOR A CERT EFFORT

Contact LAFD Disaster Preparedness, (818) 756-9674.
If phones are out, go to your local LAFD Battalion HQ.

FIRE

- A = Common Combustibles
- B = Flammable Liquids
- C = Energized/Electrical
- D = Combustible Metals

PASS = Pull the pin, Aim at the base of the fire, Squeeze the trigger hard, Sweep from one side of the fire to the other slowly



+ MEDICAL TRIAGE +

Call out to the group, if able they should move to your voice, these people probably don't need immediate treatment & are tagged "M" (Minor). Next, proceed to people who haven't moved and begin Triage

RESPIRATION

Look, listen, & feel. If not breathing open the airway (Head tilt/chin lift) If still not breathing repeat above. If still not breathing mark/tag "DEAD" and move on.

If breathing count the rate. If greater than 30/min, mark/tag "1" (Immediate) If less than 30/min, go on and assess Bleeding

PERFUSION

Have the victim/bystander control severe bleeding (direct press., elevate, pressure point) Check circulation. Use the "blanch test". Press the nail bed (or any light skinned area). Keep level with the heart. Color comes back

slowly, greater than 2 sec., mark/tag "1" (Immediate).

If color comes back quickly, in less than 2 sec., go on to Mental Status. OR Check Radial Pulse. NO = "1" YES = go on to Mental Status

MENTAL STATUS

Have the victim follow simple commands. If disoriented or unable to follow simple commands mark "1" (Immediate). If follows simple commands, is oriented & has passed all tests, mark "D" (Delayed)

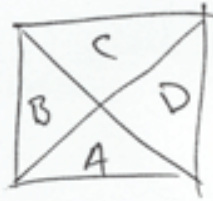
SHOCK

Treat all immediate patients for shock: Lie flat, elevate legs and maintain body temperature. Transport all patients as soon as possible. Immediate first. Do not move the DEAD unless absolutely necessary.

"M" Minor

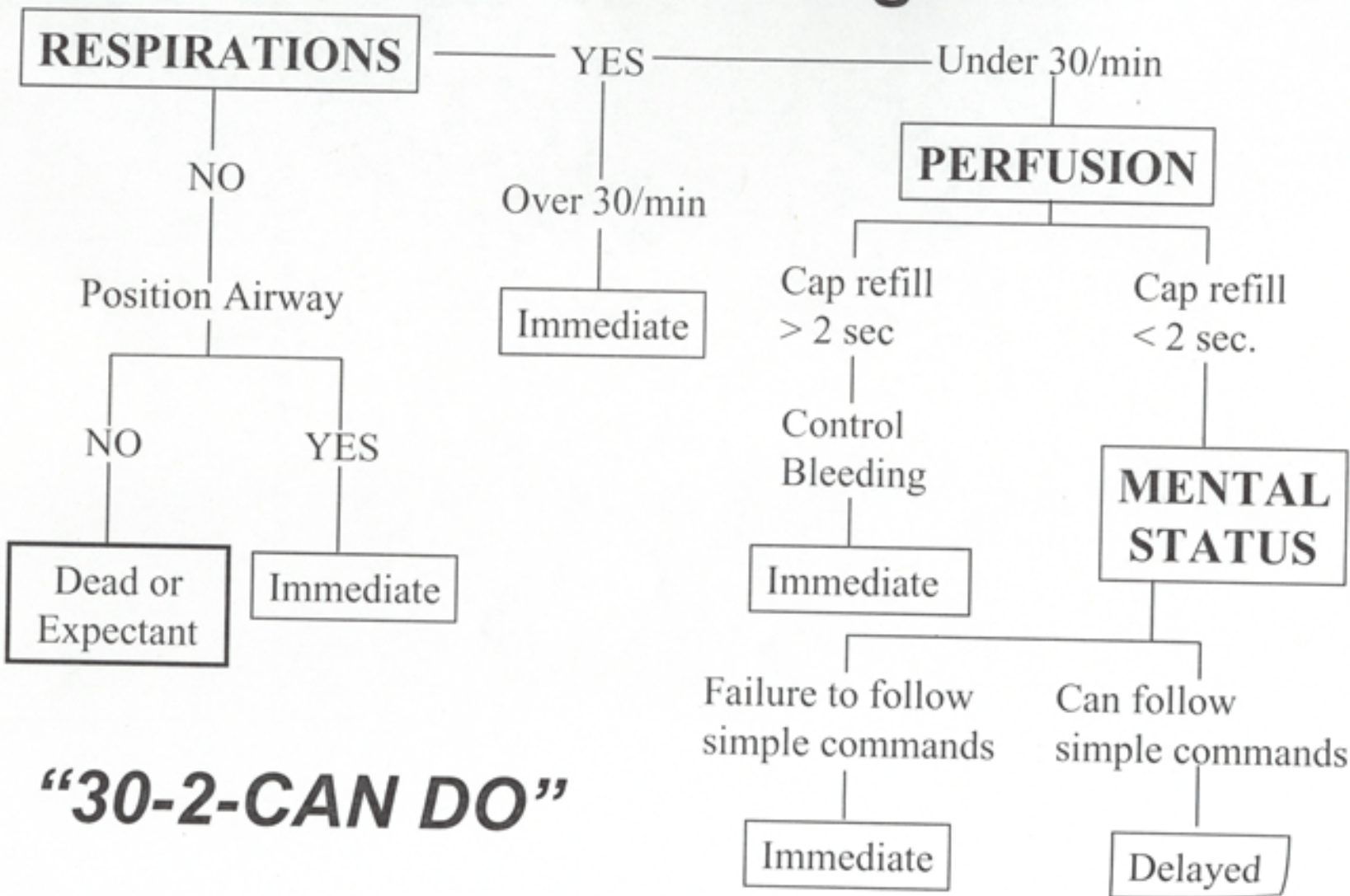
Don't forget to reassess them.

Go on to the Head-to-Toe Examination



Ambulatory = Green

START Triage

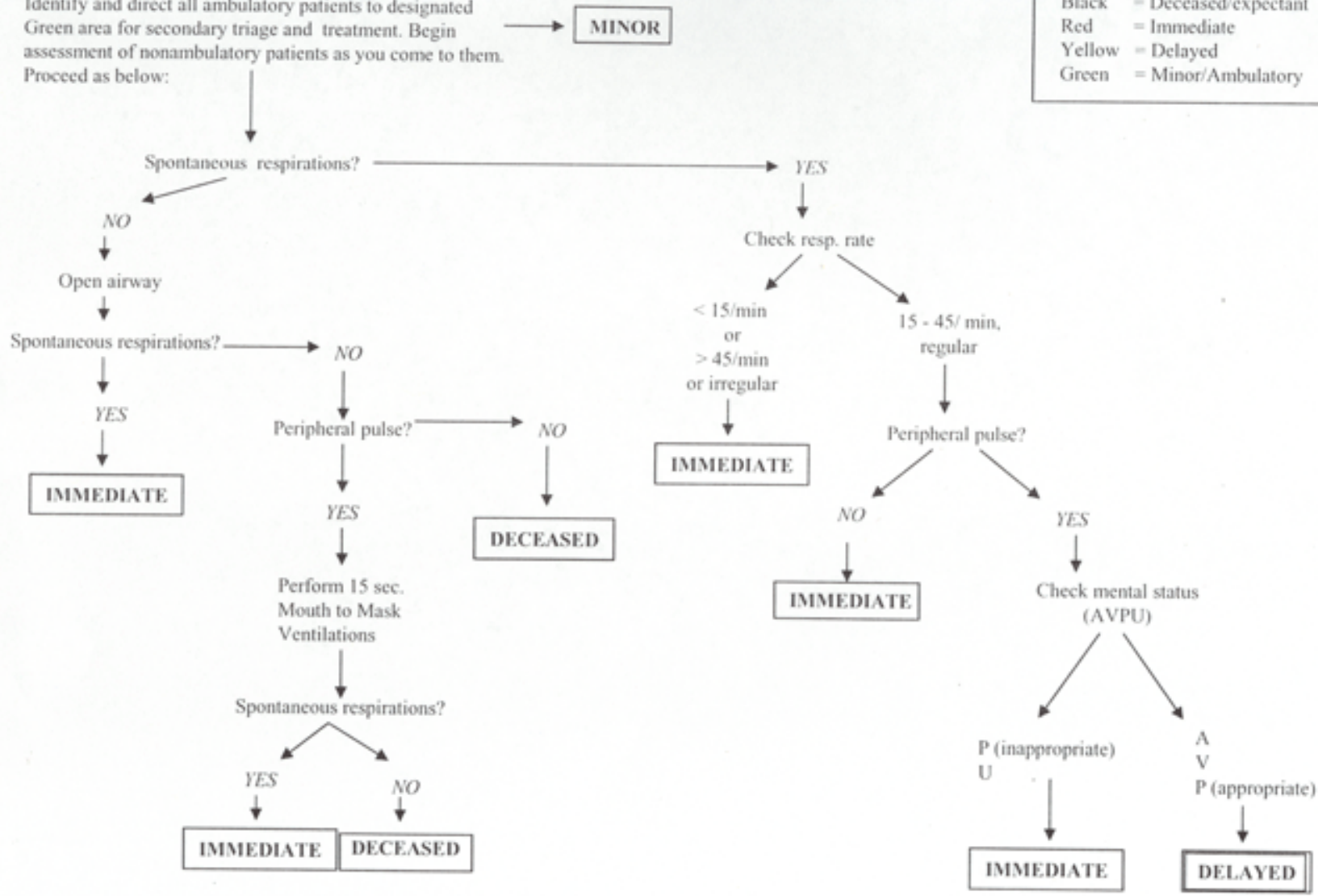


“30-2-CAN DO”

The JumpSTART Field Pediatric Multicasualty Triage System ©

Black = Deceased/expectant
 Red = Immediate
 Yellow = Delayed
 Green = Minor/Ambulatory

Identify and direct all ambulatory patients to designated Green area for secondary triage and treatment. Begin assessment of nonambulatory patients as you come to them. Proceed as below:



St. Petersburg College

26

EMS CME

© Low Romig MD, FAAP, FACEP, 1995

Emergency Medical Services – Continuing Medical Education